

2 Years on!

As we begin another busy year for the Natural Hazards Inc. business cluster our thoughts are with those affected by the events in Christchurch 2 years ago.

Whilst many of our colleagues are still extremely involved in Canterbury, we are still mindful of our main objective of securing offshore projects.

Many of our members have been visiting other countries in recent months and we urge them to share their experiences and successes.

Collaboration and being aware of what our members offer is key to our continued success, therefore each newsletter will feature 1 -2 members and their skillsets and opportunities.

Reminder:

**Earthquake Resilience Expo, Wellington NZ
26-27 April 2013 to coincide with the NZ Society
of Earthquake Engineering conference being
held at the same time. (www.nzsee.org.nz)**

**Further information and registrations for the
Expo is available at:**

<http://wired.ivvy.com/event/EXPO13/exhibitor/register>

Cluster Meeting dates:

Thursday 4pm 18 April 2013

Thursday 4pm 20 June 2013 -AGM

Thursday 4pm 29 August 2013

Thursday 4pm 24 October 2013

Thursday 4pm 5 December 2013

From the Co-Chairs:

Recap: In 2012 the Co-Chairs/Committee introduced a new style of Cluster meeting, calling upon guest speakers wherever possible.

Presenters to date have included:

- MFAT
- Red Cross
- WCC Earthquake Resilience Manager
- WREMO

These guests gave a series of fascinating presentations and illustrated the skills and expertise available in Wellington (NZ).

In 2013 we aim to keep up the high standard of presenters focusing on Natural Hazards matters and also Sustainability throughout the industries and communities we engage with.

The challenge for all members is to figure out how to utilise some of this expertise, in combination with their own core skills, to create compelling work packages for potential clients throughout the world.

Many of our members, in particular the earthquake engineering practitioners, are busy within NZ. Another challenge for the cluster is to keep in contact with past overseas clients and we do not want to lose the momentum and goodwill built up over the past decade or so.

Hannah Brackley & Greg Szakats, Co-Chairs



Company Profiles:

Landcare Research

The core purpose of LCR is to *drive innovation* in New Zealand's management of **terrestrial biodiversity** and **land resources** in order to both protect and enhance the terrestrial environment and *grow New Zealand's prosperity*.

There are 4 National outcomes involved:

- 1: Biodiversity - Improve measurement, management & protection of our terrestrial ecosystems & biodiversity, including in the conservation estate
- 2: Achieve the sustainable use of land resources & their ecosystem services across catchments & sectors
- 3: Greenhouse gas measurement and mitigation
- 4: Increase the ability of New Zealand industries & organisations to develop within environmental limits & to meet market & community requirements

In conjunction with this, LCR has established the National Land Resource Centre, an online database covering the different scientific applications around our most valuable asset – **The Land**.

There are also some cross-cutting themes:

1. **Maori at Manaaki Whenua** which encompasses:
 - Taonga – water
 - Land use - productive, urban and conservation opportunities on Maori land.
 - Tangata whenua - capability building
 - International indigenous research

2. **Informatics** – incorporating:
 - Geospatial informatics
 - Biodiversity informatics
 - Delivery – on-line, interactive, thematic, local
 - Visualisation of data
 - S-Map
 - Land Cover Data Base
3. **International Business Group**
 - Over 400 contracts through aid donors
 - Survey work – soils, biodiversity, pests and diseases
 - Integrated Rural Development projects China
 - Global strength – invasive species
 - Work in partnerships – Pacific, Latin America, Asia

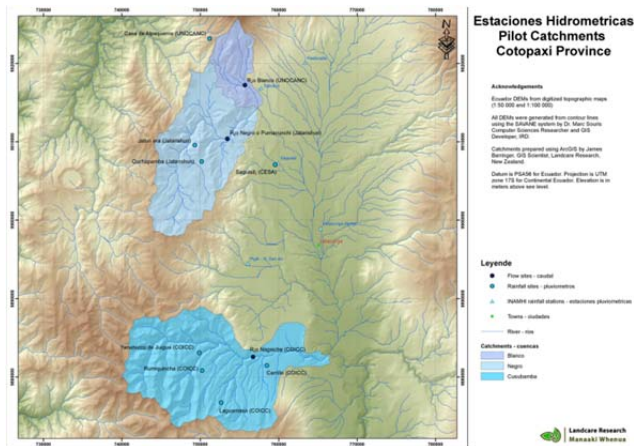
Key Contact:

**Jane Lattimore, Manager - International Business
Manaaki Whenua/Landcare Research**
Email: LattimoreJ@landcareresearch.co.nz
Phone: +64 3 321 9848 Mobile: +64 21 387 747

Tonga Eua Forest Environmental Assessment



Landcare Research Ecuador Project – infrastructural risk management project, involving hydrological mapping and catchment maps, and community consultation.



Interesting Links

For the latest news and events from other organisations:

- **CERA (Canterbury Earthquake Recovery Authority):** www.cera.govt.nz
- **Canterbury Earthquakes Royal Commission:** <http://www.canterbury.royalcommission.govt.nz>
- **New Zealand Society for Earthquake Engineering:** www.nzsee.org.nz
- **NZ Aid Programme:** www.aid.govt.nz/

NIWA – Urban Impacts Toolbox

Developed by NIWA in collaboration with MWH New Zealand Limited, GNS Science and BRANZ, the urban impacts toolbox is available to assist planners, engineers, asset managers and hazard analysts understand and evaluate the potential impacts of climate change on their cities.

Each tool has been written so that it can be read and understood on its own, with references to other tools included within. The tools demonstrate, using worked examples, methods and approaches that can be used to perform an assessment of climate change impacts. Readers are encouraged to contact the authors of the tools to discuss using specific software or other proprietary material.

The information in this Toolbox is consistent with the Australian and New Zealand Standard for Risk Management, AS/NZS ISO31000:2009, which is widely used in the public and private sectors to guide strategic, operational and other forms of risk management.

To view the toolbox, go to:
www.niwa.co.nz/climate/urban-impacts-toolbox.

Key Contact:

Dr Andrew Tait,
Principal Scientist, NIWA
Phone: +64 4 386 0562

Natural Hazards Inc. Members' Expertise

- Strategies for disaster risk reduction, readiness, response and recovery.
- Development of organisational frameworks for emergency management.
- Emergency management education.
- Community preparedness for natural disasters.
- Multi-hazard land use planning.
- Improvement of building controls, standards and codes.
- Seismic retrofit strengthening of buildings, including simple houses.
- Seismic isolation of important buildings such as hospitals, schools, emergency management centres, government buildings, apartment buildings and heritage buildings.
- Tsunami and flood risk assessment, modelling and mitigation strategies.
- Disaster risk insurance strategies and systems.

Natural Hazards Inc. Key Contacts

Co-Chairs:



Dr Hannah Brackley
GNS Science
+64 4 570 4564, +64 21 481 581
h.brackley@gns.cri.nz



Greg Szakats
URS Limited
+64 4 496 3760, +64 21 680 387
greg.szakats@urs.com

Facilitators:

Graeme Carroll and Blair Griffiths

Global Reach Associates Limited

Graeme.Carroll@globalreachassociates.com

Blair.Griffiths@globalreachassociates.com

PO Box 10681

Wellington 6143

New Zealand

+64 4 470 5554, +64 21 435 401